



Give
hope
Change
lives

NUH CHILDREN'S FUND DONOR REPORT

(April 2023 to March 2024)



Scan this QR code or visit bit.ly/abtnuhsfund to find out more about NUHS Fund Limited!

ABOUT NUHS FUND

NUHS Fund Limited is a Company Limited by Guarantee (CLG) and a registered charity with IPC status.

The charity was set up to promote medical research and development as well as provide health related services for the benefit of the Singapore Community.

Your compassion to support patients, especially those assessed to be in financial need, will make a difference in their journey back to better health.

ABOUT NUH CHILDREN'S FUND

NUH Children's Fund supports children undergoing treatment at the Khoo Teck Puat – National University Children's Medical Institute (KTP-NUCMI), the paediatric arm of the National University Hospital and principal teaching facility of the Department of Paediatrics of the Yong Loo Lin School of Medicine, National University of Singapore.

The focus of KTP-NUCMI's academic, research and clinical programmes is to find better ways to assess, manage and treat paediatric conditions to enable our young patients to realise their fullest potential and achieve their best in health and in life.

Philanthropic support provides us with the extra assistance to excel in what we do – provide the best possible outcomes for our young patients. Your support will help to change the future of these young lives in Singapore.

© This report is intended for donors. Please contact the NUHS Development Office at (+65) 6772 5552 or nuhsfund@nuhs.edu.sg should you wish to share this report with others.

OVER THE PAST 12 MONTHS,



214

beneficiaries and their families received support of \$835,606



351

applications were approved



85

beneficiaries had more than one application approved

You made this possible.
Spread the word.



Invite your friends and family to support what you believe in!

Scan this QR code or visit bit.ly/ktpnucmi to make a donation.

BY CITIZENSHIP

Based on application data

Majority of our applicants are Singaporeans.

96%

Singaporeans

2%

Permanent Residents

2%

Resident Foreigners

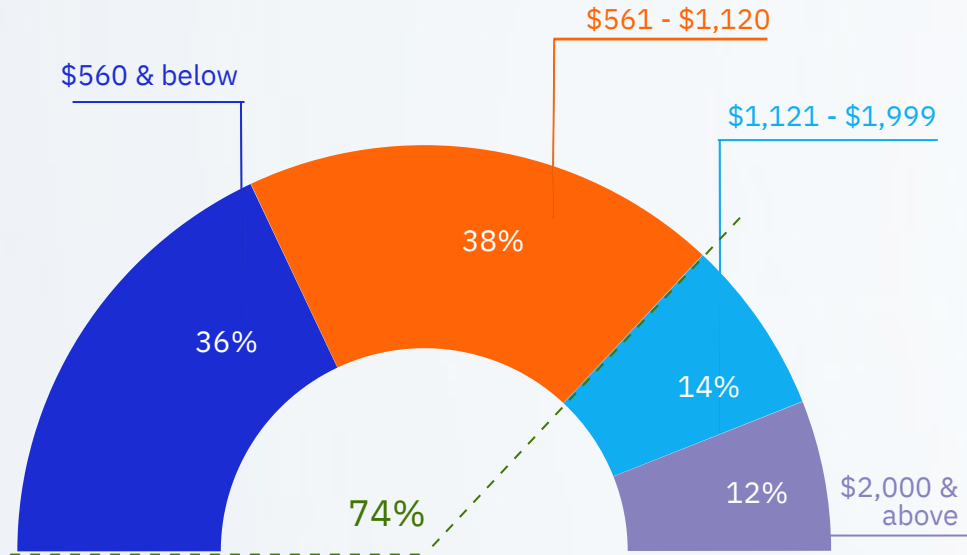
Support is given to Singaporeans and Permanent Residents for costs not supported by other assistance schemes.

The fund also supports Resident Foreigners who have spent a "reasonable" time in Singapore and are part of our Singapore community.

BY PER CAPITA INCOME

Based on application data

74% of applications come from the **lowest 20% PCI** of our community, measured by Department of Statistics (Household Income), 2021.



BY CONDITION

Based on dollar amount supported

Multiple Comorbidities
38%

Genetics / Rare Diseases
16%

Nutrition & Digestive Tract
9%

Kidney
8%

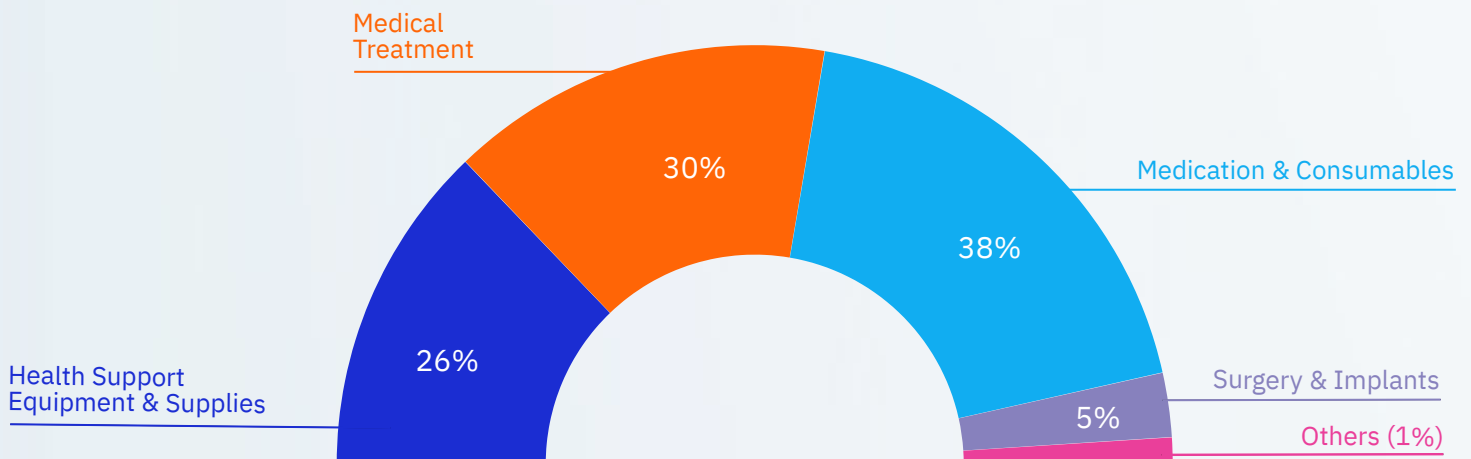
Musculoskeletal
6%

Others*
23%

*Cancer, Neurology, ENT, Eye, Dermatology, Liver & other diseases.

BY SUPPORT CATEGORY

Based on dollar amount supported



Your Gift Matters!

Twins Ben* and John* were born prematurely at 26 weeks, resulting in Bronchopulmonary Dysplasia.

Apart from long-term follow-up with a Paediatrician, the condition also requires the use of home care equipment. This has been financially challenging for their single mother, who has to see to their needs and is unable to work.

Your support has helped to cover Ben's and John's medical expenses, providing much relief to the family.

"I am truly blessed to get help from all the donors who have contributed. It hasn't been an easy journey caring for my two boys but the help I've received has definitely lifted some weight off my shoulders!"

- Ben and John's mother

*Names have been changed.

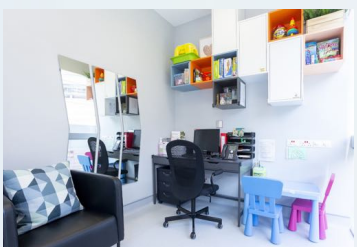


Visit this link to learn more about our beneficiaries:
<https://www.nuhs.edu.sg/Make-a-Gift/Pages/Your-Gift-of-Hope.aspx>

Thank you for lighting up their lives!

Partner us,
Change lives.

- AXA XL & Variety Christmas Gift Giving, 2017 - 2019
- Disney & Make A Wish Children's Day Gift Giving, 2017 - 2023
- LEGO Build-To-Give, 2018 - 2023
- NarrARTives of Kenobi, 2020
- Project Aurora, 2021 - 2022
- Round Up Lah! x Timbre Group, 2016 - 2019
- The Giving Tree, 2015 - 2023



Email us at nuhsfund@nuhs.edu.sg should you or your company wish to support patients in need of financial aid in any way!