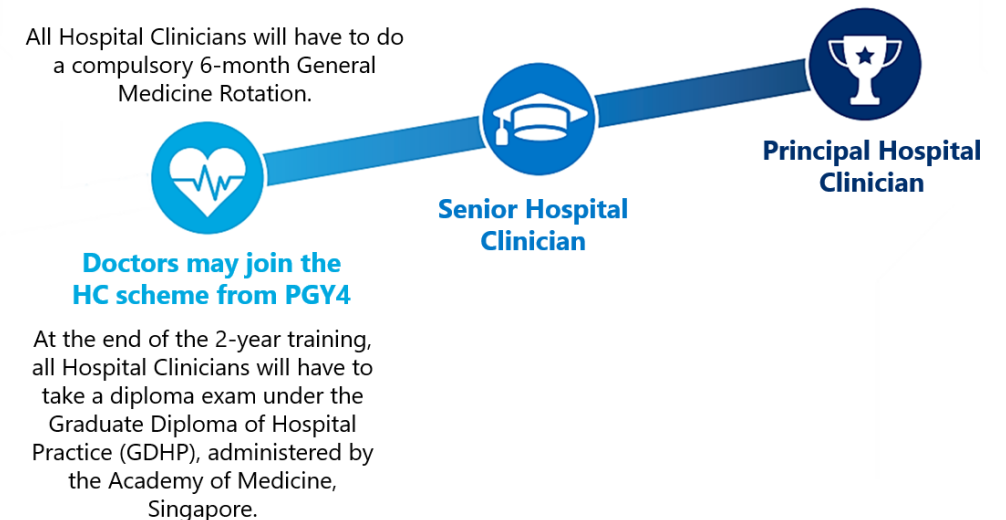




Be Part of a Dynamic Force in Transforming Healthcare

The Hospital Clinician Scheme is designed to provide a comprehensive and structured long-term career path for doctors who aspire to reach higher levels of responsibilities, working closely with inpatient teams in a hospital setting. Hospital Clinicians will progress in their career in the Medical, Peri-operative or Paediatrics domain.



As a Hospital Clinician

You will anchor medical care in the acute to subacute inpatient ward setting, with broad-based medical competencies complementary to specialists' narrower depth of competencies. As such, you will be expected to perform the following roles:

- i. Initial assessment and treatment
- ii. Routine reviews, documentation, communication, changes, simple procedures
- iii. Identify critically unwell patients, initiate early resuscitation with support from senior doctors
- iv. Perform common ward-based/bedside procedures under guidance/supervision from senior doctors

HOSPITAL CLINICIAN SCHEME

A Fulfilling Career with NUHS

Choice of Domains and Institutions

Medical: Acute & Sub-acute Care	Peri-operative: Surgical and Anaesthesia	Paediatrics
Areas include Medicine, ICU, Emergency Department, Community Hospital	Areas include General Surgery, Orthopaedics, Anaesthesia	Areas include General Paediatrics, Children's Emergency, Urgent Care Clinic, Neonatology
Acute resuscitation and management of common conditions	Partner the surgical team to anchor Peri-operative medical care in an inpatient setting	Management of common conditions, coordinating care and empowering patients and their families
Semi-autonomously providing care		Identification and resuscitation of the sick child

Nurturing Environment

The development and well-being of Hospital Clinicians are imperative to building a sustainable healthcare system.

In our OneNUHS family, you will receive:



Attractive compensation & benefits



Structured career progression to Senior and Principal HC



Opportunities and funding for local & overseas training



Sponsorship of recognised academic qualifications



Train alongside Residents & Specialists within the system



Long-term and viable career with work-life balance



Flexibility to rotate across disciplines



Opportunities to pursue interests in non-clinical areas (e.g. Education, Quality Improvement)

Masters Programs

Two specially-curated Masters options will be offered to suitable candidates.

- i. Masters in Biomedical Informatics (MSc BMI) with a specialisation in Hospital Management
- ii. Masters in Public Health (MPH) with a specialisation

These Masters are from the NUS Yong Loo Lin School of Medicine and Saw Swee Hock School of Public Health. Sponsorship is available to selected candidates.



Eligibility

For locals (either Singaporean, Singapore Permanent Resident or local-trained foreigner*):

(i) Have at least two years (full-time equivalent) of work experience as a Medical Officer (MO)^ in Singapore

For Foreign Trained Foreigner (FTF) Medical Officer Posting Exercise (MOPEX) MOs:

- (i) Have at least five years of practice in Singapore as a Medical Officer (MO) in the MO Posting Exercise (MOPEX) pool; and
- (ii) Are MOH Holdings (MOHH)-employed MOs in the MOPEX pool;

**Local-trained foreigners are doctors who have graduated from a local medical school or have completed local residency training.*

^Medical Officers applying for Paediatrics domain must have at least 6 months of relevant postings in Paediatric Medicine, Children's Emergency and/or Neonatology.

Application

The HC intakes are in January and July each year. Applications can be submitted anytime during the year, with the following cut-off for each intake:

1. September for January intake
2. March for July intake

Send in your CV and a Letter of Recommendation from a supervisor or Senior Clinician on your suitability to join the Scheme via this link <https://for.sg/nuhshcapply> or scan the QR code below. Our HR colleagues will be in touch with you to arrange for the interview and selection process.

Scan to apply!



Delivering Incredible Care & Health, Together

The National University Health System (NUHS) is one of three public healthcare clusters in Singapore. It is also an integrated Academic and Regional Health System that delivers value-driven, innovative and sustainable healthcare in Singapore. Our close links with the National University of Singapore (NUS) promote strong collaborations and synergy between research and clinical practice.

Contact us

Refer to the FAQs pages for answers to commonly asked questions. For any other questions, connect with us at nuhs_edo@nuhs.edu.sg.

Scan to find out more!

Or visit our website at <https://for.sg/nuhshc>

