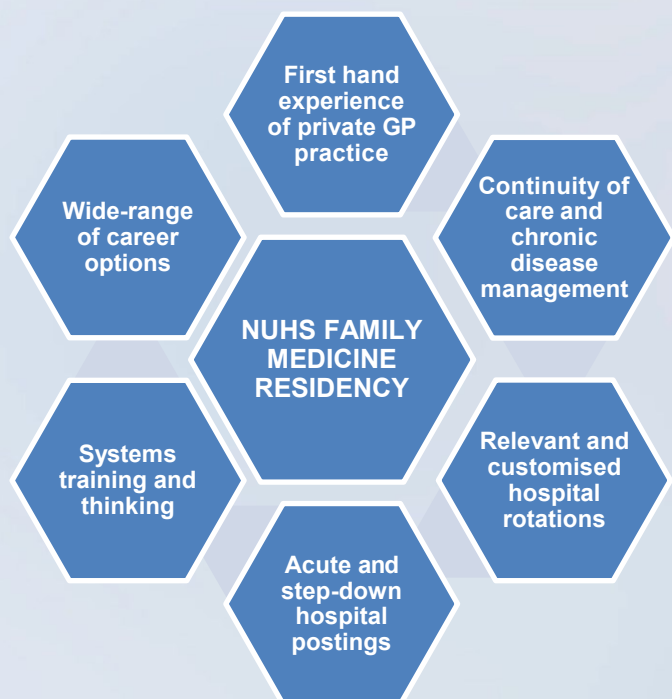


NUHS FAMILY MEDICINE RESIDENCY PROGRAMME

The NUHS Family Medicine Residency Programme family comprises National University Hospital (NUH), Ng Teng Fong General Hospital (NTFGH), St. Luke's Hospital (SLH), Jurong Community Hospital (JCH), National University Polyclinics (NUP), Raffles Medical Group (RMG) and Frontier Healthcare Group.

We offer a diverse experience based in an academic hospital, a general hospital, community hospitals, polyclinics, and private clinics. Our residents have exposure to a unique public-private mix that spans the breadth of family medicine.



Dr Ruth Zheng
Programme Director



What is Special about Us?

We provide blocks of private general practice and public polyclinic rotations to ensure you are exposed to a wider range of primary care service models. The Resident Continuity Clinic (RCC) will also form part of your learning journey throughout the three years of Residency training. In addition to usual hospital and primary care rotations, you will have clinical attachments to nursing homes and palliative care services, to ensure you see patients across the continuum of family practice.

Structured training is provided in NUH, NTFGH, SLH and JCH in relevant and wide-ranging inpatient rotations, and we make every effort to correlate what you learn inpatient with outpatient perspectives.

It's not all academic! We provide opportunities for you to develop your potential in leadership and administrative roles, teaching and research tracks, and other involvement within the NUHS community.

We value building a community whose relations continue beyond residency. We provide many post-residency opportunities to return to contribute to the programme and to the NUHS family.

Sample Rotation of a NUHS FM Resident

FAMILY MEDICINE RESIDENCY PROGRAMME														
Rotation Matrix														
Month	July	August	September	October	November	December	January	February	March	April	May	June		
Year 1	Adult Medicine						Paediatrics & Children Emergency (CE) (NUH)			Obstetrics & Gynaecology (O&G) (NUH)				
	Geriatric Medicine (SLH/JCH)			Internal Medicine (NUH/NTF)										
	Residency Continuity Clinic (RCC)													
Year 2	Orthopaedic Surgery (NUH/NTF/AH)			General Surgery (GS) (NUH/NTF)		Urology (NUH/NTF)	Emergency Medicine (EM) (NUH/NTF)		IM Ambulatory IM(Ambu) (NUH/NTF)	General Practice (GP) (RMG/Frontier)	General Practice (GP) (RMG/Frontier)	NUP		
						NUP (2 weeks)					NUP (2 weeks)			
	Residency Continuity Clinic (RCC)													
Year 3	ENT (2wks)		ENT (2wks)	National University Polyclinic (NUP)* (PIO, CCK, BBK, JUR, CLM, QT, BPJ)				Derm (2 wks)		Cardio (2 wks)		Elective	Palliative (NUH/NTF)	Psy (NUH/NTF)
	Residency Continuity Clinic (RCC)													
* ENT, Eye, Derm and Cardio postings will be done as 2 week attachments during the Polyclinic block.														
* Block rotations are scheduled in blocks of calendar months, in line with the main department duty rotations.														
* Exact order of rotations are subject to change.														

Rotation Site:

- General Surgery, Emergency & Internal Medicine & Psychiatry posting is either at NUH or NTFGH.
- Geriatric Medicine posting is either at St Luke’s Hospital or Jurong Community Hospital.
- GP Block rotation is either at Frontier Healthcare Group or Raffles Medical Group.
- Palliative posting consists of 2 weeks at NUH and 2 weeks at NTFGH.
- Paediatric posting consists of 3 months Children Emergency (CE).
 - Neonatal and ambulatory exposure during CE posting



Contact Us

Programme Coordinators

- Ms. Nadiyah Ikbar (Nadiyah_IKBAR@nuhs.edu.sg)
- Ms. Rukhshana Maufiqah (Rukhshana_Maufiqah_HUSIEN@nuhs.edu.sg)
- Ms. Zahirah Poa Hui Shan (Zahirah_HS_POA@nuhs.edu.sg)